

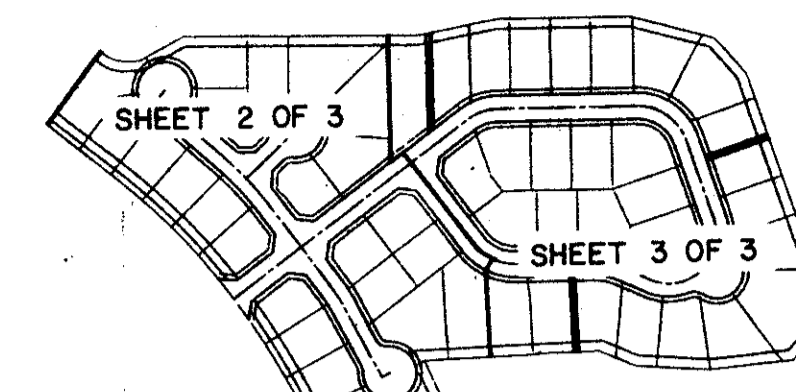
LAKE CHARLESTON TRACT "N"

A PART OF LAKE CHARLESTON PLANNED UNIT DEVELOPMENT

SHEET 2 OF 3

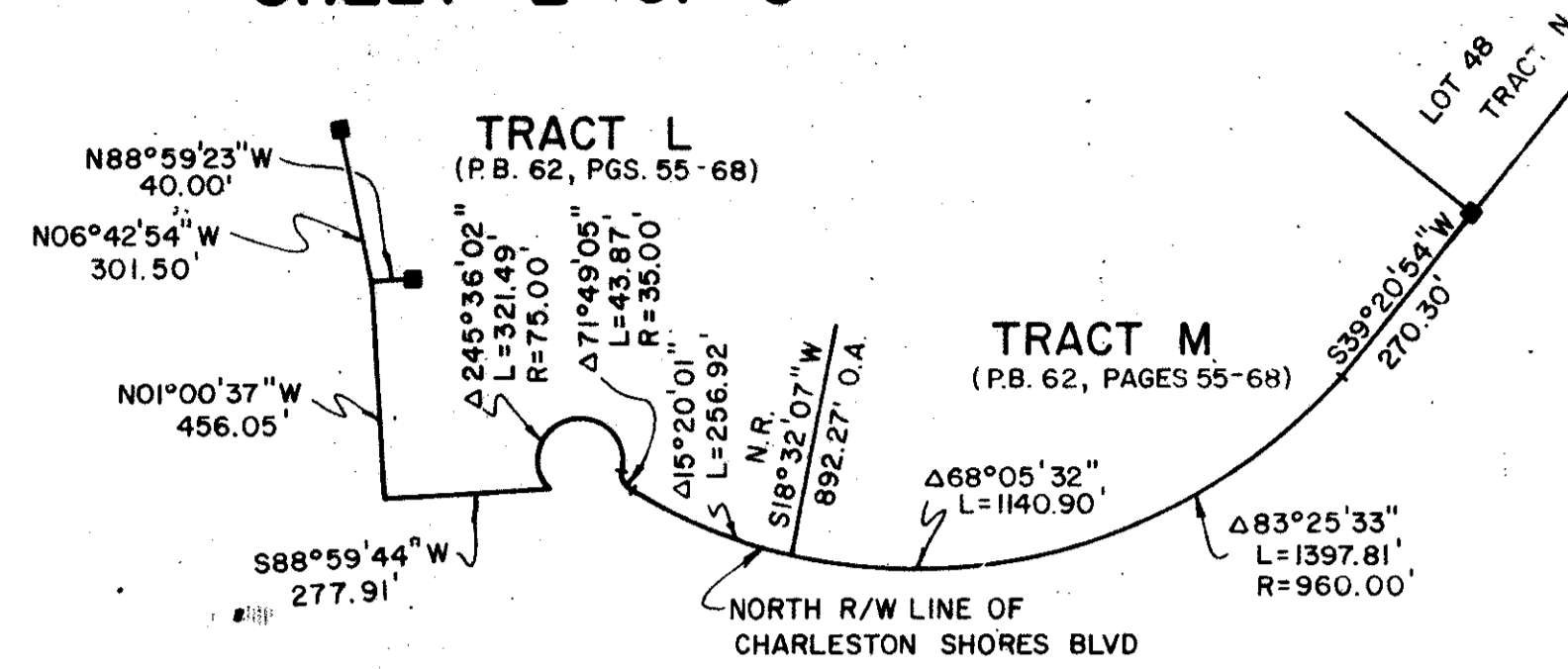
0533-007

42

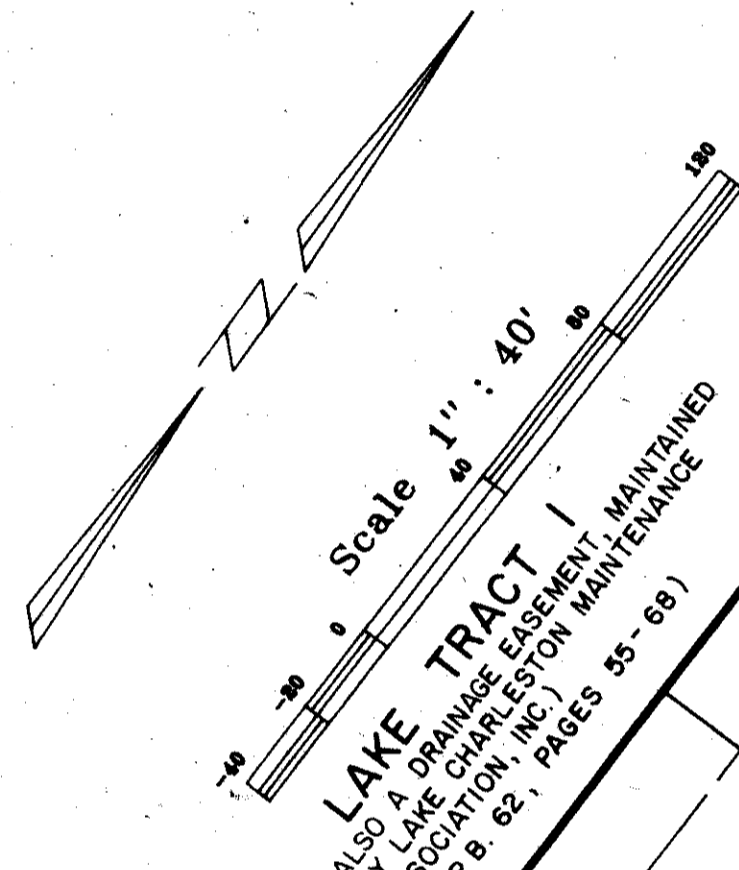


KEY MAP

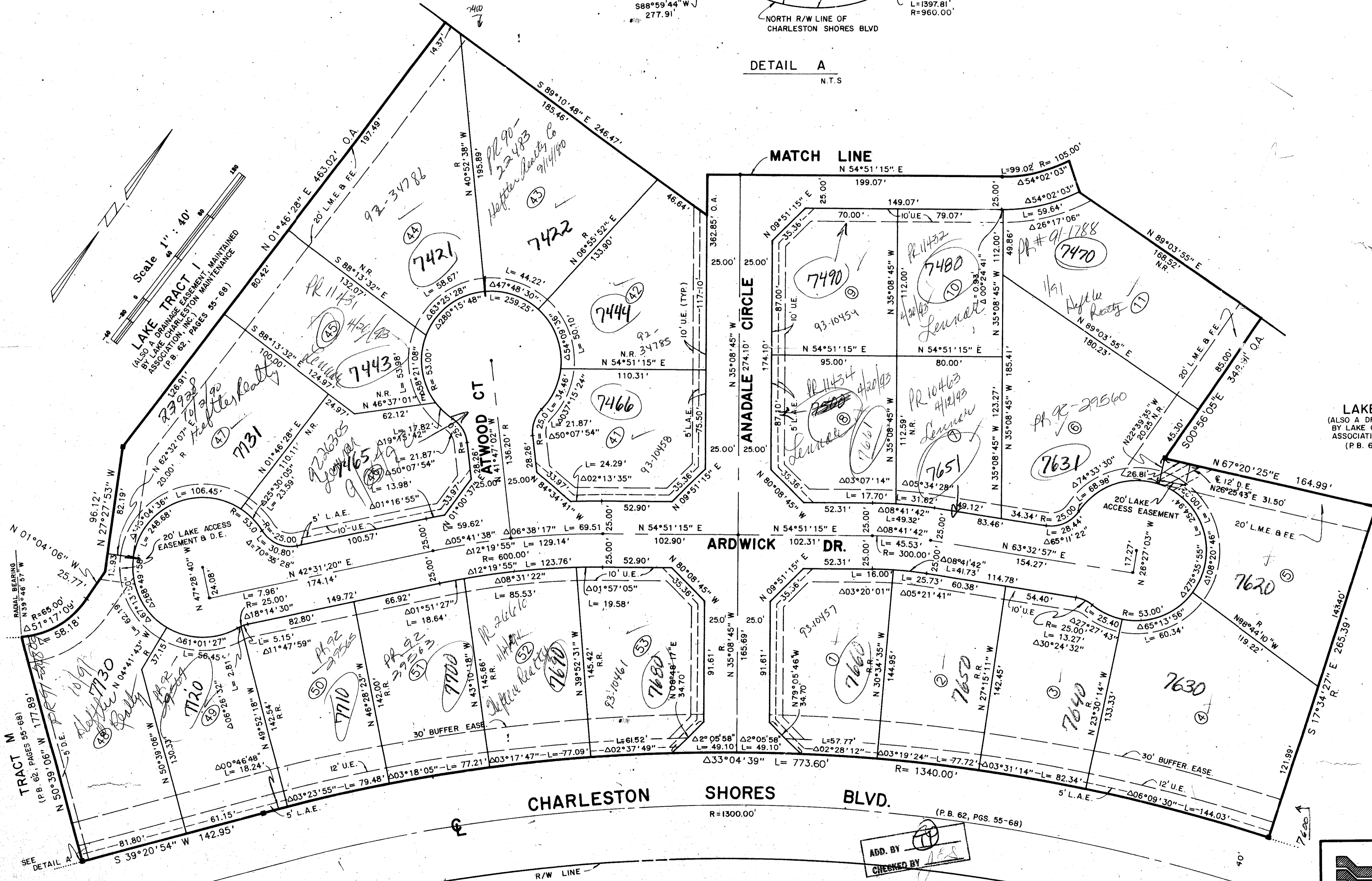
STATE OF FLORIDA
COUNTY OF PALM BEACH
This Plat was filed for record at _____
M. this _____ day of _____, 19____
and duly recorded in Plat Book No. _____
on Page _____
John B. Dunkle, Clerk of the Circuit Court
By _____



DETAIL A
N.T.S.



LAKE TRACT I
(ALSO A DRAINAGE EASEMENT MAINTAINED BY LAKE CHARLESTON MAINTENANCE ASSOCIATION, INC.) (P.B. 62, PAGES 55-68)



LAKE TRACT I
(ALSO A DRAINAGE EASEMENT MAINTAINED BY LAKE CHARLESTON MAINTENANCE ASSOCIATION, INC.) (P.B. 62, PAGES 55-68)

TRACT O
(P.B. 62, PAGES 55-68)

TRACT T
(P.B. 62, PAGES 55-68)

TRACT U & P
(P.B. 62, PAGES 154-157)

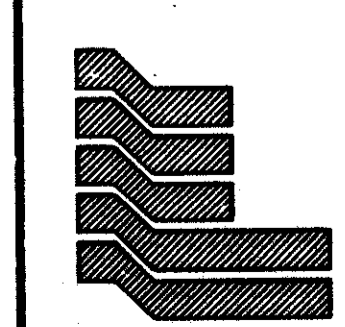
PET. 86-96
ALLOCATION #0005
WITH ASSIGNMENT LETTER
RTS/PUD

0533-007
~~0533-008~~

64/42

SUBDIVISION: Lake Charleston
BOOK: 64
PAGE: 42
FLOOD ZONE: B
COUNTY: PALM BEACH
DATE: 5/19/94
SHEET: 42 OF 42
JOB NO: 33467
JOB CODE: 33467
JOB NAME: Lake Charleston PUD
JOB NO: 33467

ADD. BY: [Signature]
CHECKED BY: [Signature]



Landmark Surveying & Mapping Inc.
1850 FOREST HILL BOULEVARD
PH. (305)433-5405 SUITE 200 W.P.B. FLORIDA

LAKE CHARLESTON
TRACT "N"